

How to put out your trash

A helpful guide to separating and recycling your trash in Akashi City

English

Burnable trash

on every () day & () day.

Food/Trash



Leather items



- If possible, any excess liquid should be drained.



Plastic items



Rubber items



- Twigs/Grass bundled or put into plastic bags. A maximum of 2 to 3 bags each collection day.
- White trays used for such items as meat or fish can be taken to your local supermarket where they can be collected.

Nonburnable items

on the () Wednesdays of every month.

Dishes/Glass



Metal



- For safety, all broken Dishes/Glass or Knives need to be wrapped with newspaper. Put into a bag marked with "キケン(Danger)" on it.

Small electric appliances



Others



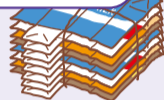
- Aerosol cans/Gas cartridges should be used up and pierced outdoors. Put into a bag marked with "ボンベキケン" and left separate from other nonburnable trash.

- Button batteries/Small rechargeable dry cell batteries can be taken to local electrical retailers where they can be collected.

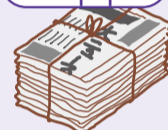
Paper/Old Clothes

on the () Saturdays of every month.

Milk/Juice cartons



Newspapers



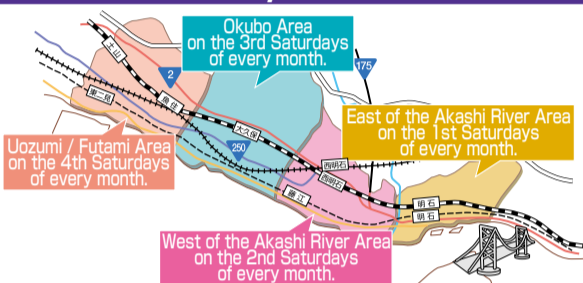
Cardboard



Magazines/Other



Old clothes



- Items will be collected even on rainy days.
- Each item should be left separate at the fixed place for recyclables.
- Only usable clean clothes will be accepted, they need to be put into plastic bags.
- Also these items can be collected by your local community group.

Recyclables

on the () Wednesdays of every month.

Empty cans



PET bottles



Empty bottles



- Containers of only food & drink (Cans larger than 1 liter will not be accepted. Powdered baby milk cans will be accepted.)

- Cans/Bottles require caps & labels (PET bottles) to be removed and any liquid rinsed out.

Trash should be placed ready for collection by 8am of the morning of pick up. Also please refrain from putting it out the night before.

Oversize trash

In the case of the trash larger than a 45 liter plastic bag or heavier than 5 kg.

Applying for a collection service

- 1 Call Sodaigomi Uketsuke Center (the Oversize Trash Reception Center (☎937-0937))
Reception opens, Mon thru Fri from 9am to 7pm, including public holidays
Disposal fees vary depending on the items, so please confirm the costs beforehand.
- 2 Buy Oversize Trash Disposal Tickets
These tickets are available from Post Offices/the Citizen Center/the Citizen Service Center/convenience stores/super markets/rice stores displaying this sign.
- 3 Paste the tickets on the trash and put it out in the appointed place by 8am on the day given.



Trash that is not accepted

Commercial trash from companies/offices/stores/hospitals/restaurants
Temporary large amount of trash from house-moving/branches cut off trees, etc.

- Items can be taken to the Akashi Clean Center (☎918-5790), see the reference on the left, or made an agreement in disposing them with the company authorized by Akashi city.

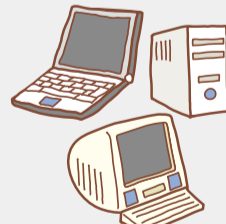
The Home Appliance Recycling Act

- Air conditioners with outdoor units/TVs/Refrigerators/Freezers/Washing machines/Tumble dryers can be returned to the store you bought the item from.



Personal Computer Recycling Policy

Personal computers/Displays etc. can be returned to the manufacturer.
Also these are collected at the City Hall/Citizen Center, see the reference on the left.



Hard-to-dispose/Hazardous products

- Any type of needle can be collected by your local hospital/pharmacy for proper disposal.



- Fire extinguishers
Please call the Fire Extinguisher Recycling Center (☎03-5829-6773)

Others; Buddhist alters and fittings /Pianos/Tires/Motorbikes/Batteries/Paint/Thinner/Waste oil/Chemicals (Insecticides/Herbicides etc.)/LP gas containers/ Concrete blocks or Wood trash from construction or demolition/Agricultural equipments/ Fishing equipments (For further information, please consult with the store/manufacturer you bought the item from.)

Items can also be taken to the Akashi Clean Center, charges do apply.

Notification of disposal services

Call Sodaigomi Uketsuke Center (☎937-0937) and make an appointment prior of you taking it there.
Reception opens, Mon thru Fri from 9am to 7pm, including public holidays.

Other locations where you can recycle items :the City hall/Citizen Center, etc.

Waste-vegetable cooking oil

Small household items

Cell-phones/Personal computers/Digital cameras/CD players etc.
Please call Shigen junkan ka (The Resource Conservation Division ☎918-5794) for further details regarding items that can be collected/ the place/the collection days/hours.

*The numbers given require you to be able to speak Japanese. If you have any difficulty with the language please get someone who can speak Japanese to assist you in making the call.