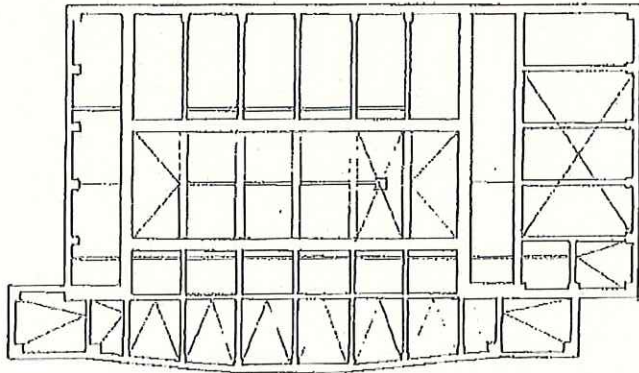
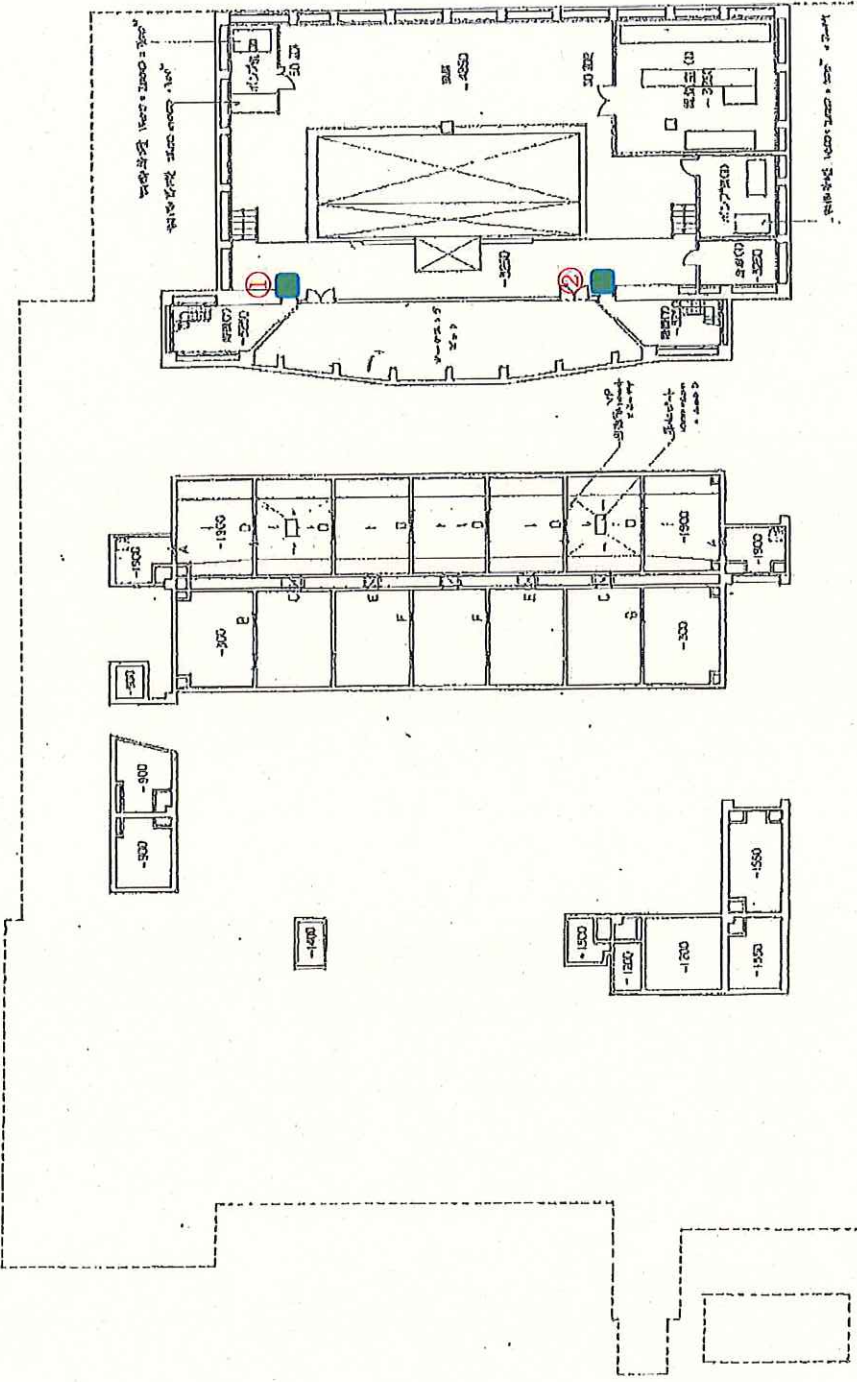


B1



3 150 19 500 3 150

- (37)
- (38)
- (39)
- (40)
- (41)
- (42)
- (43)



3 150 89 300 3 150

- (71)
- (72)
- (73)
- (74)
- (75)
- (76)
- (77)
- (78)
- (79)
- (80)
- (81)
- (82)
- (83)
- (84)
- (85)
- (86)
- (87)
- (88)
- (89)
- (90)
- (91)
- (92)
- (93)
- (94)
- (95)
- (96)
- (97)
- (98)
- (99)
- (100)

| | |
|-----|------|
| 50 | 5000 |
| 51 | 5000 |
| 52 | 5000 |
| 53 | 5000 |
| 54 | 5000 |
| 55 | 5000 |
| 56 | 5000 |
| 57 | 5000 |
| 58 | 5000 |
| 59 | 5000 |
| 60 | 5000 |
| 61 | 5000 |
| 62 | 5000 |
| 63 | 5000 |
| 64 | 5000 |
| 65 | 5000 |
| 66 | 5000 |
| 67 | 5000 |
| 68 | 5000 |
| 69 | 5000 |
| 70 | 5000 |
| 71 | 5000 |
| 72 | 5000 |
| 73 | 5000 |
| 74 | 5000 |
| 75 | 5000 |
| 76 | 5000 |
| 77 | 5000 |
| 78 | 5000 |
| 79 | 5000 |
| 80 | 5000 |
| 81 | 5000 |
| 82 | 5000 |
| 83 | 5000 |
| 84 | 5000 |
| 85 | 5000 |
| 86 | 5000 |
| 87 | 5000 |
| 88 | 5000 |
| 89 | 5000 |
| 90 | 5000 |
| 91 | 5000 |
| 92 | 5000 |
| 93 | 5000 |
| 94 | 5000 |
| 95 | 5000 |
| 96 | 5000 |
| 97 | 5000 |
| 98 | 5000 |
| 99 | 5000 |
| 100 | 5000 |

